

ThermoTRACK-IR 2

One of Spectrum Instruments' family of "EC" (economy) products

Infrared Thermal Imaging Camera



- Intuitive functions
- Real-time 50 Hz image display and analysis
- Three types of temperature units available (°C, K, °F)
- Built-in flash memory to store 1000 to 2000 images in JPEG format
- Quick access button settable for your operation
- Built-in laser pointer for target sighting

Features



Ultra compact and simple operation

A compact and ultra-light design makes the camera easy to aim and capture clear crisp images. Ergonomic control buttons enables access to all functions.

Accurate temperature measurement and great image quality

ThermoTRACK-IR offers you unmatched temperature measurement accuracy with thermal sensitivity of 0.1°C. Clear, noise-free, quality images displayed on the camera's 2.5" color LCD provides the operator with instance access to mechanical and electrical defects.

Multi temperature measurement mode

ThermoTRACK-IR cameras include multi-measurement modes as a standard: movable spot and areas with average/max/min temperature tracking, line profile, isotherms and temperature difference, all of which enable the operator to capture detailed thermal data for analysis. The function of visible and audible alarms allows the camera to assist operators observing selected target areas automatically.

Built-in flash memory

Built in flash memory store up to 1000 image of JPEG picture format along with a 40 seconds digital voice clip recording per image; the large memory capacity makes it convenient for operators to refresh the image memory multi-times in order to better trend select operating anomolies

Intelligent power control system

Automatic shutdown and sleep mode are designed to save battery power; solid states electronics and power saving functions provides up to 3 hours of continuous operation.

Super Analyze report software offered

This easy-to-use report software contributes to fast, accurate evaluation of infrared inspection results, allowing you to create all your reports in Microsoft Word®. And an extra toolbar on your screen gives you instant access to specific functions for detailed analysis



Accessories



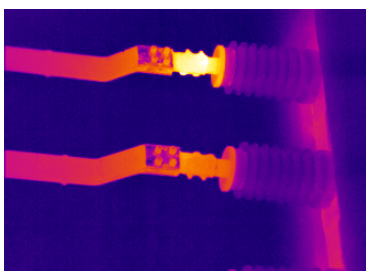
Connection interface



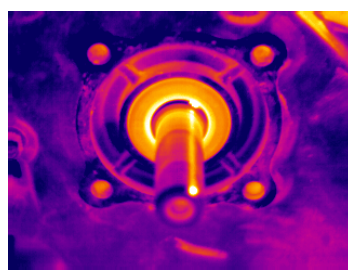
Optional Lens (Wide/Telescope lens)

Application

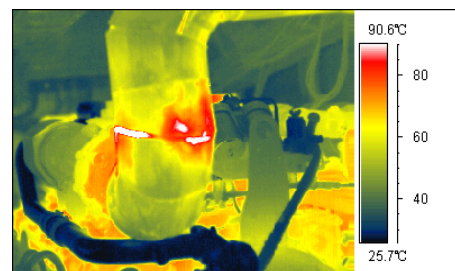
Non-destructive testing of industrial equipment in the power generation, electric distribution, railway, petroleum and petrochemical industry, and industrial inspection



Power industry



Bearing testing



Pipe testing

Technical Specification

Items		ThermoTRACK-IR 2	
Detector Characteristics	Detector type	Uncooled FPA microbolometer	
	Array size/format	160 × 120	
Image Characteristics	Field of view/min focus distance	18° × 13° / 0.3m	
	Spatial resolution (IFOV)	1.9 mrad	
	Thermal sensitivity	0.1°C@30°C	
	Frame rate	50/60Hz	
	Focus	Manual	
	Electronic zoom	2x	
	Spectral range	8-14um	
Image Display	LCD	Built-in high-resolution color 2.5" LCD	
Measurement	Temperature ranges	-20°C-+350°C, optional up to +600°C	
	Accuracy	± 2 °C or ± 2% of reading, Whichever is greater	
	Measurement correction	Automatic/manual	
	Measurement mode	Up to 4 movable spots. Up to 3 movable areas (maximum, minimum and average temperatures). Line profile. Isotherms. Temperature difference. Alarm (voice, color)	
	Image controls	Color palette	11 palettes changeable (Iron, Rainbow, Grey and Grey inverted, etc.)
		Image adjustment	Auto/manual gain and brightness
	Setup functions	Date/time, temperature unit, language	
	Emissivity correction	Variable from 0.01 to 1.0	
	Amb temp correction	Automatic correction according to user input	
	Atmospheric Transmission correction	Automatic correction according to user input object distance, relative humidity , ambient temperature	
Image Storage	Type	Storage card	Built-in flash memory, Up to 2000 images
		Storage mode	Automatic/manual single image saving
	File format-thermal	JPEG, 14 bit thermal image with measurement data	
	Voice annotation	Input via built-in microphone up to 40 seconds of digital voice per image stored with image	
Laser pointer	Laser pointer	Class 2, 1mw/635nm(red)	
Power supply	Battery type	Li-Ion, rechargeable	
	Battery operating time	3 hours continuous operation	
	Charging system	Intelligent charger or power supply adaptor(optional) online charge	

	Power saving	YES
Environment	Operating temperature	-15°C- +50°C
	Humidity	≤90% non-condensing
	Encapsulation	IP54
Physical Characteristics	Weight	0.6Kg
	Dimensions	250mm×100mm×72mm
Interface	External DC input	Yes
	Audio output	Yes
	Video output	PAL/NTSC
	USB	Image and measurement data transfer to PC

Spectrum Instruments Ltd has collectively over 40 years of experience with infrared thermal imaging and thermal imaging products; need assistance? Contact us today to:

REVIEW YOUR APPLICATION

ASSIST WITH CAMERA SELECTION

INFRARED PROGRAM IMPLEMENTATION

TRAINING ON CAMERA OPERATION AND IMAGE ANALYSIS

COORDINATING CAMERA REPAIR

INFRARED CAMERA RENTAL

CONTACT INFORMATION

**Corporate Office
& International Sales**

**Spectrum Instruments Ltd
44 Forest Drive
Brighton, ON K0K 1H0
Canada**

**P: 613-438-8767
F: 866-782-0106
E: info@spectrum-instruments.com**

**Domestic Sales
& Warehouse**

**Spectrum Instruments Ltd
897 St. Charles St. West
Breslau, ON N0B 1M0
Canada**

**P: 1-800-778-3428
F: 866-782-0106
E: info@spectrum-instruments.com**

Sales Partners Located Around the World:

Canada, Chile, China, Columbia, Costa Rica, Egypt, India, Indonesia, Iraq, Israel, Korea, Malaysia, Mexico, Thailand, USA, and Vietnam

